



Understanding allocation and expenditure data

Disparities Elimination Committee, November 18, 2021

Common terms

- Fiscal year (FY): a 12-month period used to report finances. For example, March 1, 2021 – February 28, 2022. Also called grant year or budget year.
- Part A: As part of their Federal Ryan White grants, Hennepin County receives Ryan White Part A and Part A MAI funding, which can only be used in the TGA. See [map of TGA](#).
- Part B: Minnesota Department of Human Services (DHS) receives Part B funding which can be used statewide. Part B funding includes funding for the AIDS Drug Assistance Program (ADAP) and Part B MAI. DHS also receives funding from the State and generates Rebate revenue from its 340B drug program.



Allocations

- Resource allocation is deciding how much Ryan White funds should be allocated to each service priority.
- The council is the decision maker for Part A funds and provides recommendations for Part B funds.
- We allocate funds only to prioritized service categories that are legislatively approved for funding.
- See: [Resource allocation process](#)



Expenditures

- The amount of money spent.
- Monitoring allows us to:
 1. Reallocate funds
 2. Adjust future allocations based on actual use of funds
 3. Estimate the costs of serving additional clients



What kinds of data/information are included in an expenditure report

- Projected
- Proportion of funds spent to date

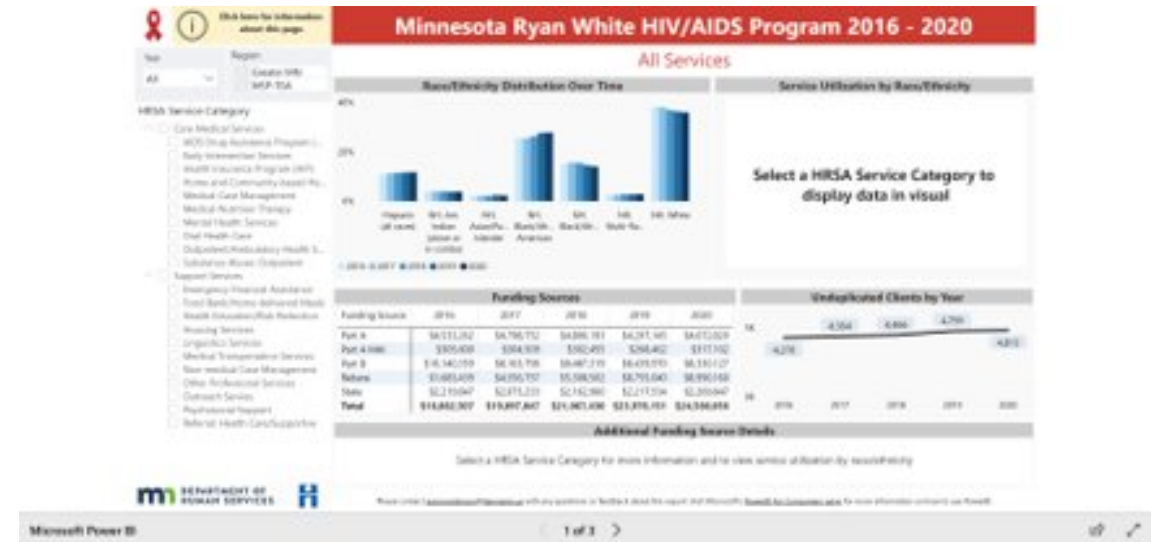
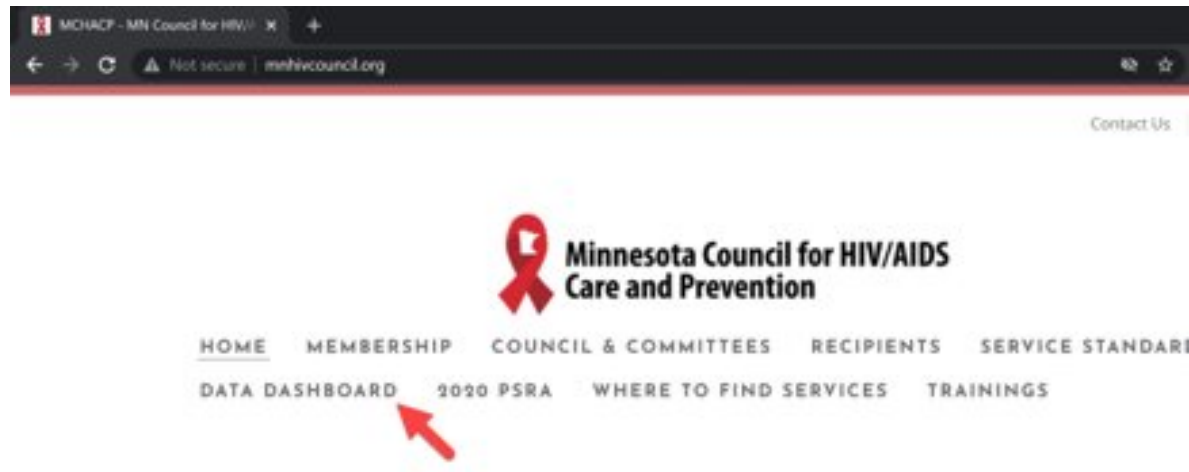
Quick Reference Handout 10.1 PC/PB Guide to Data Types and Sources, Planning CHATT

<https://targethiv.org/sites/default/files/supporting-files/Module10-QRH10.1.pdf>

Who provides the data and how often?

- The recipients (Part A and Part B) – from its internal financial management staff/system
- Usually includes quarterly reports

MN RWHAP public Power BI report is the best source for client, service, and expenditure data



Direct link: [Minnesota Ryan White HIV/AIDS Program \(RWHAP\) public Power BI report](#)

Understanding an expenditure report

Let's review!

http://www.mnhivcouncil.org/uploads/3/4/7/5/34759483/2021.11.09_council_expenditure_report_fy2021_q1-q2.pdf

Quick discussion: Using expenditure data

- What percent of funding would you expect to see expended (spent) at the end of the 6th month of the Part A program year?
- What concerns does this report raise for the council?
- How might the council use this information?